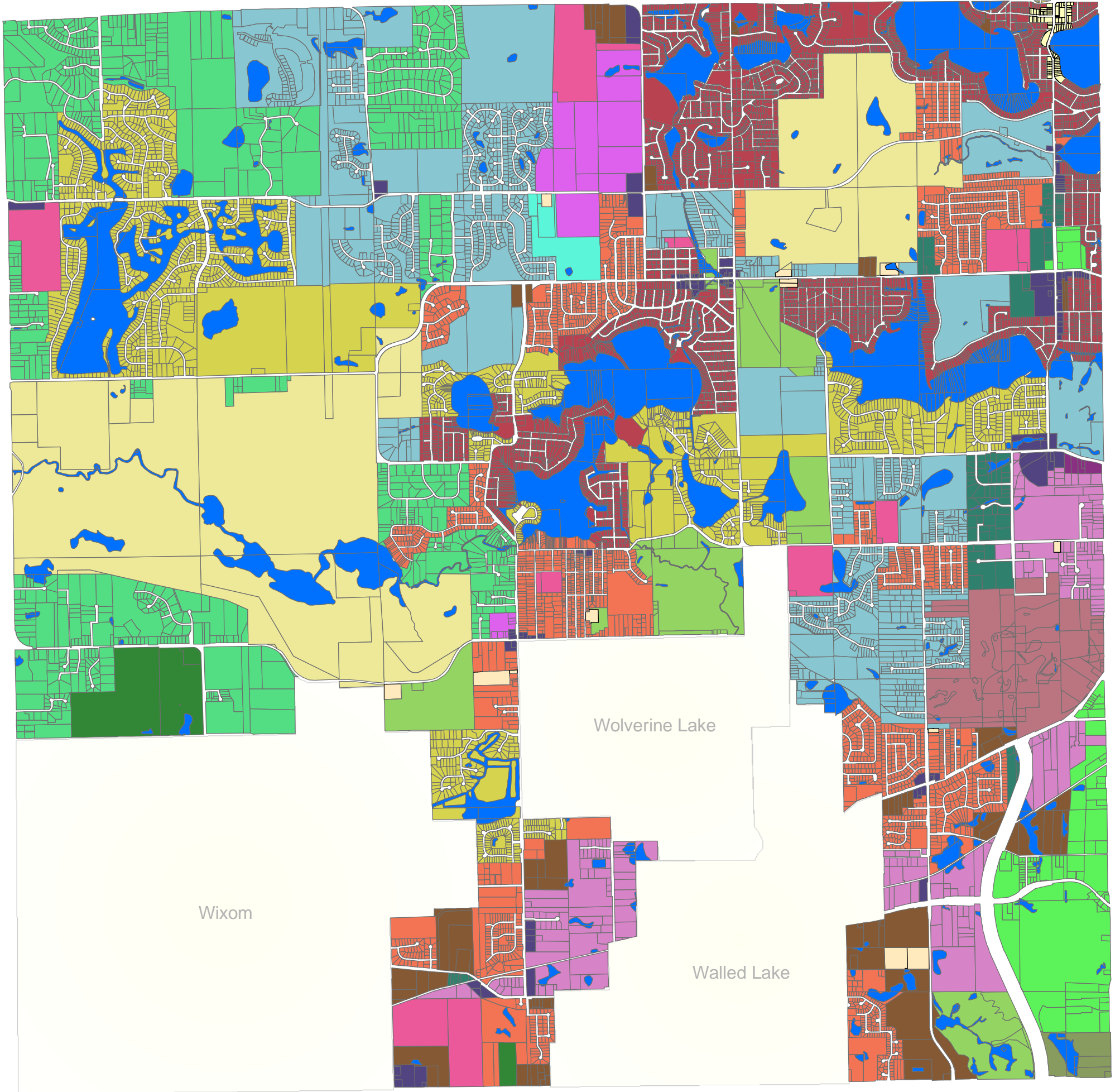


Commerce Township Existing Drainage Problems Map



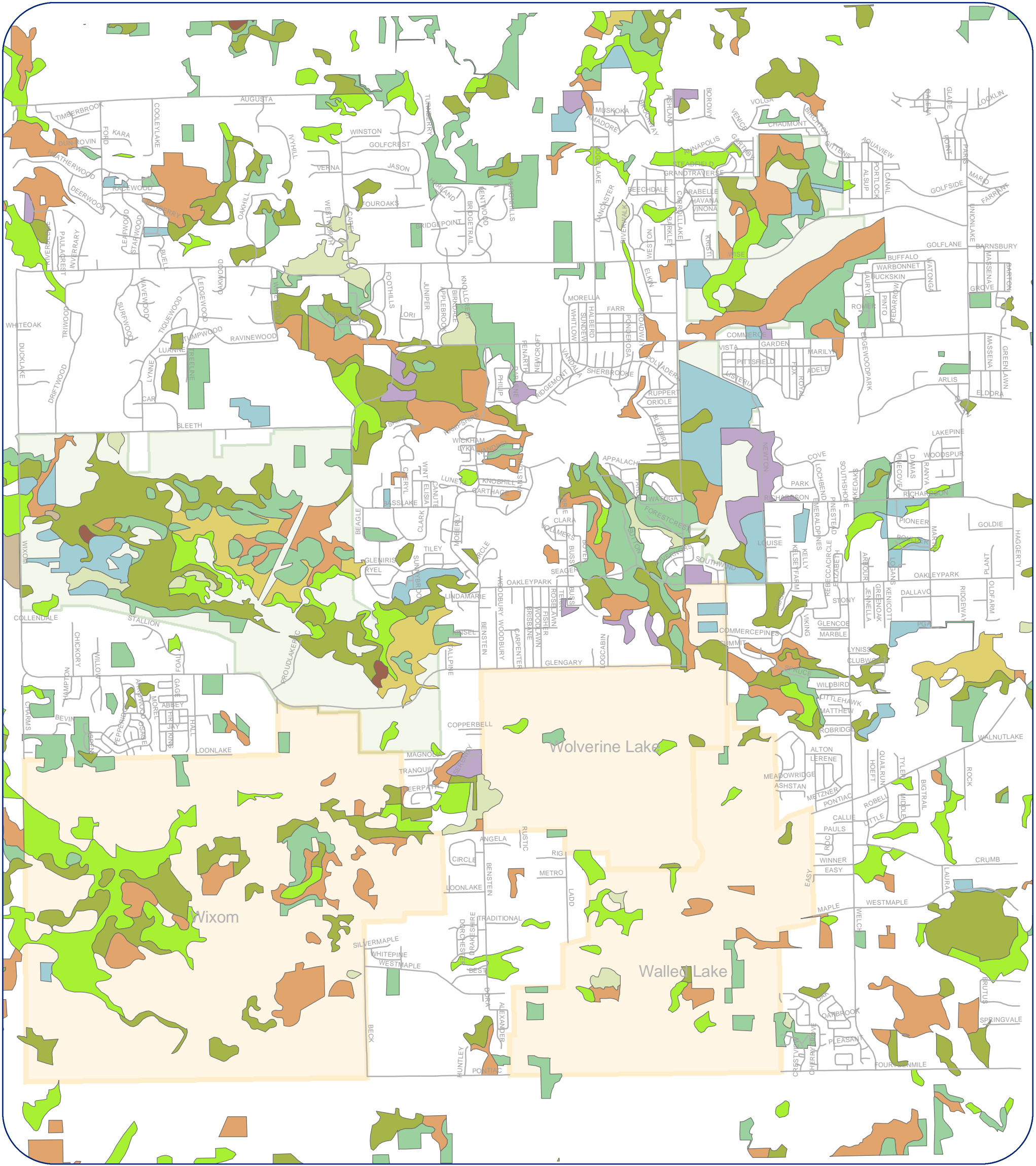


Commerce Township Future Land Use Map



Future Land Use

Community Commercial	Lake	Park
Community Facilities	Lake Front Residential	ROW
Cottage Residential	Mobile Home Park	Residential Natural Features
Four Corners	Multiple Family	Rural Residential
General Commercial	Neighborhood Commercial	School
Hospital	Neighborhood Residential	State Land
Industrial	Office	Town Center
	Office Research	Typical Single Family



Commerce Township Wetlands Map



Legend

Forested Wetlands

- Lowland Conifer
- Lowland Hardwood
- Mixed Wooded Wetland

Non-Forested Wetlands

- Aquatic Bed
- Emergent Wetland
- Shrub/Scrub

Woodlands

- Aspen/White Birch Association
- Central Hardwood
- Other Upland Conifer
- Pine

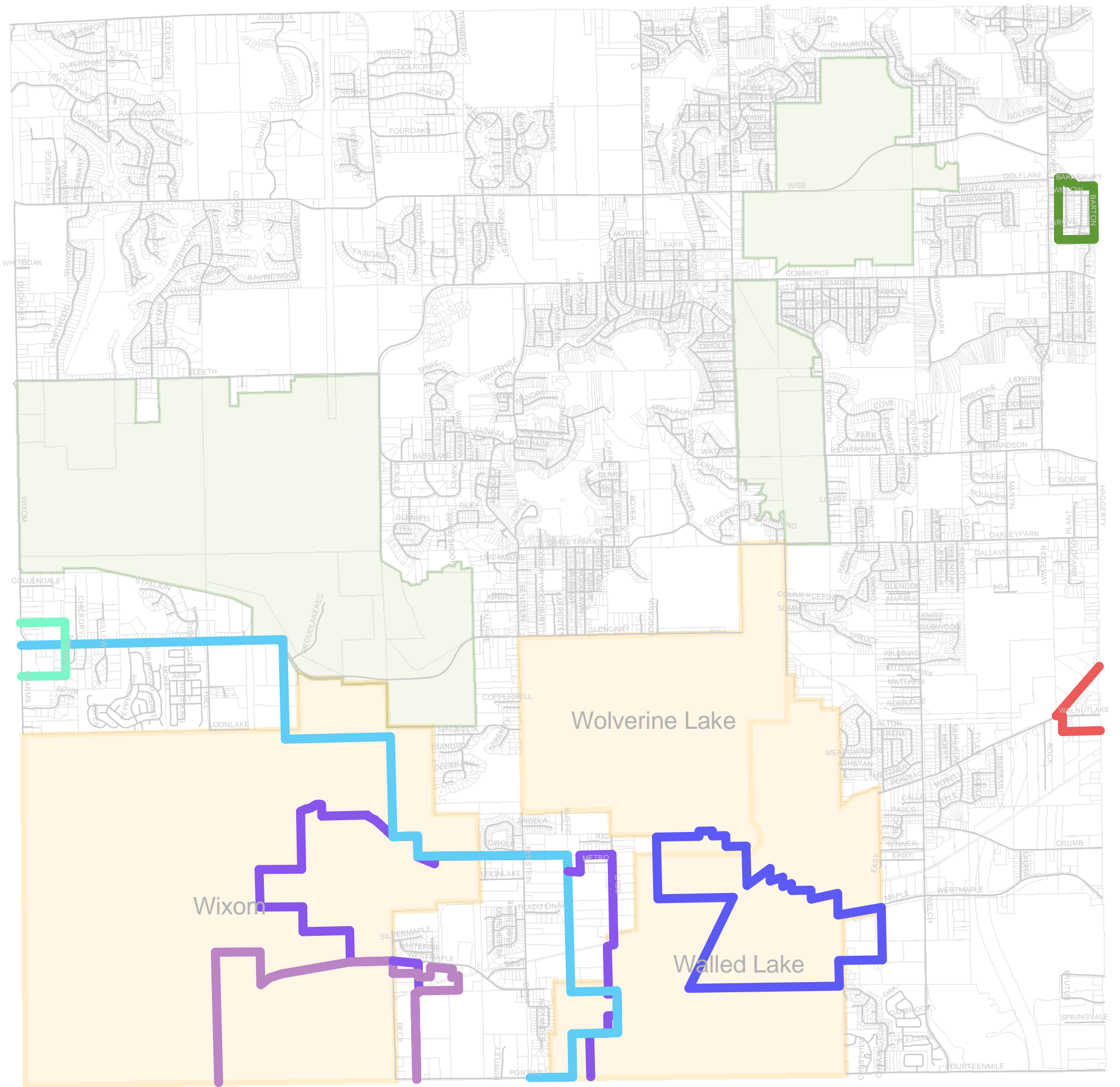
- Commerce Streams
- Recreational Areas



- SOMEWHAT POORLY DRAINED, MAY BE WETLAND, OFTEN NOT
- POORLY DRAINED, INCLUDES SILTY LOAMS, ETC.
- VERY POORLY DRAINED, INCLUDES MUCKS, ETC.
- INCLUDES WALLED LAKE AND VILLAGE OF WOLVERINE LAKE AND PART OF WIXOM

Commerce Township Soils Map

Commerce Township Storm Water Master Plan: Exhibit D Soils Map (No Scale)



Commerce Township Legal Drainage Districts



- | | |
|---------------------------------|-------------|
| Legal Drainage Districts | Norton |
| Greenaway | Sibley |
| Maynard | Taylor-Ladd |
| Montante | Wessinger |